

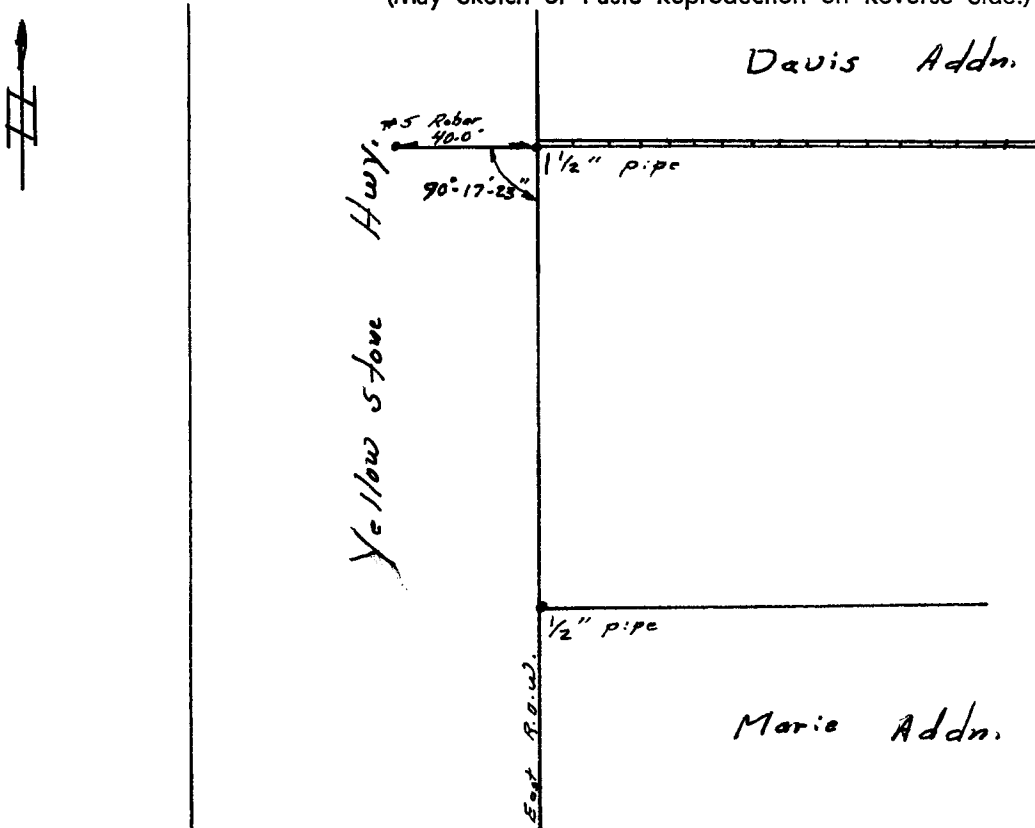
CERTIFIED LAND CORNER RECORDATION

Location	DESCRIPTION OF CORNER EVIDENCE FOUND, AND ORIGINAL RECORD (if known)
	Found # 5 rebar in asphalt.
1/4 24 19	G.I.O. record - not known.
T 14 N, R 66W 6th P.M.	

DESCRIPTION OF MONUMENT AND ACCESSORIES ESTABLISHED TO PERPETUATE THE ORIGINAL LOCATION OF THIS CORNER:

Left corner as found.
See sketch for witnesses to corner.

SKETCH, WITH COURSE AND DISTANCE TO ADJACENT CORNER IF DETERMINED IN THIS SURVEY.
(May Sketch or Paste Reproduction on Reverse Side.)



I, Robert C. Corbet certify that I have carefully performed or reviewed the work done on the diagrammed corner as reported on this recordation form and approve the same.

Robert C. Corbet
Signature of Surveyor

495
Registration No.

STATE OF WYOMING,
Office of Clerk and Recorder,
County of Taramie

This "corner record" was filed for record on the 6 day of January, 1974, was noted on the cross-index plat and is assigned page No. _____, in book No. _____.

James C. Whitehead

County Official

Cross Index No. <u>P 1/25</u>	T. <u>14</u>	R. <u>66</u>	Mer.
_____	T. _____	R. _____	Mer.
_____	T. _____	R. _____	Mer.
_____	T. _____	R. _____	Mer.
_____	T. _____	R. _____	Mer.
_____	T. _____	R. _____	Mer.
_____	T. _____	R. _____	Mer.

Photographed ✓
 Indexed *FB* ✓
 Rosted *FB* ✓
 Assessor ✓

The State of Wyoming }
 County of Laramie } ss

This instrument was filed for record
 at 12:30 o'clock P.M. on the
 6 day of January
 A. D. 19 75 and duly recorded in
 Book on page

James C. Mitchell

County Clerk & Ex-Officio Register of Deeds
 by *FB* Deputy

7